

**BRISTOL**

**JOB SHOW**

**CABOT CIRCUS  
BRISTOL**

**LONDON**

**JOB SHOW**

**Westfield  
LONDON W12**

**LONDON**

**JOB SHOW**

**Westfield  
STRATFORD CITY**

**MANCHESTER**

**JOB SHOW**

**TRAFFORD  
CENTRE  
MANCHESTER**

**IMK JOB SHOW**

**centre:mk  
MILTON KEYNES**

**BE PART OF THE UK'S BIGGEST & BEST RECRUITMENT EVENTS**

# READ WHAT OUR EXHIBITORS HAVE TO SAY ABOUT THE SHOWS...

**PRIORY HEALTHCARE**

This is the first job show we've been to that encompasses all the roles that we have to offer. From here we've managed to talk about receptionists through to housekeeping, through to our catering teams, administration and our clinical positions.



**NHS East of England Ambulance Service NHS Trust**

We had such success last time that we have decided to come back. Purely for the amount of candidates we saw and the success we had for recruitment.



**NHS Milton Keynes University Hospital NHS Foundation Trust**

There is a real buzz about the event. We've already been approached by a number of doctors, pharmacists, we've got someone from IT, a specialist security expert, as well as nurses and occupational therapists. It's a great place to come.



**NHS Central and North West London NHS Foundation Trust**

We met 55 strong candidates with relevant skills, experience and qualifications. Including 5 RGN'S, 5 RMN'S, 1CPN, 1 Dental Nurse, 1 Speech & Language Therapist, 3 Phycologists, 4 Physiotherapists, 1 Podiatrist, 30 HCA's, 4 CAMHS.



**NHS Health Education England**

It's been fantastic. It's really great, there's loads of people here, loads of enthusiasm and there's so much interest from people of all ages of working in the NHS, so it's really fantastic!



**carerstrust Thames Crossroads care service action·help·advice**

The show has been a very positive experience for us. We have been able to conduct face to face screening to provide us with quality applications. A very well organised show.

**CERTITUDE LONDON FOR THE LIFE YOU WANT**

We received 780 applications! Always busy and well promoted.



Last year, we had so many healthcare workers apply at our stand, that have progressed through the ranks and are up to senior healthcare assistants managing a unit now. So really successful for us.



Really good. We are actually surprised by the calibre of people that we met. Originally we just came here just to get our brand Clearblue out there, but we've had some really good candidates, some people that we are surprised about.



Great service. Good layout and location. Overall great experience!



To any organisations thinking of attending the Job Show, I would say definitely, it's been so worth it for us and I think a lot of organisations would benefit.



High footfall. Lots of experienced candidates.



We arranged 120 interviews! Brilliant event!



Whether it's admin & clerical jobs, healthcare assistant jobs, therapy jobs, nursing jobs...It's been absolutely brilliant all day.

## JOB SHOW 2024 DATES

SHOW	2024 DATES
London Job Show Stratford	2 & 3 February 2024
Manchester Job Show	1 & 2 March 2024
MK Job Show	22 & 23 March 2024
Bristol Job Show	19 & 20 April 2024
London Job Show W12	26 & 27 April 2024
Manchester Job Show	13 & 14 September 2024
MK Job Show	20 & 21 September 2024
London Job Show Stratford	27 & 28 September 2024
London Job Show W12	11 & 12 October 2024

## ABOUT US

We are the leading organiser of the UK's biggest and best recruitment events. Over the last 10 years we have become a trusted partner with employers of all sizes, course providers and training organisations.

Uniquely held in the middle of shopping centres, our events benefit from the 10,000+ active job seekers (people that pre-register having seen our marketing campaign), and over 100,000+ passive job seekers (the natural footfall of each venue).

Employers enjoy working with us as we are a cost-effective alternative to agency fees. Our events also enable employers to stand out offline away from an overcrowded online job market. The many benefits of attending our events are detailed on the next page.




**10,000+**  
Active Job seekers

The amount of people that pre register to attend each event having seen our targeted marketing campaign.



**100,000+**  
Passive Job seekers

The natural footfall of our shopping centre venues.




**5 - 60**  
New Hires

The amount of hires employers typically make per event.



**200 -1,000**  
Talent Pool Additions

The amount of people employers typically add to their talent pool per event.



**400-6,000**  
Profile Views

The amount of profile views exhibitors typically receive on our website before each event.

Contact our team today at [info@jobshows.co.uk](mailto:info@jobshows.co.uk)

# BENEFITS OF ATTENDING JOB SHOW EVENTS

1

## Cost Effective

Employers typically hire 5 - 60 people per event. With regards to cost per hire, compared to agency fees, exhibitors continue to save money from attending our events. There is no a limit to the amount of candidates you can hire, and no ongoing fees.



2

## Growing Your Talent Pool

Employers typically add 200 - 1,000 people to their talent pool at each event. A new talent pool of people they can hire from throughout the year. Many exhibitors will hire people they meet during the event 3-6 months afterwards.



3

## Pre Event Applications

Our websites and marketing campaigns generate huge exposure for each exhibitor. Many job seekers will see an employer is attending our event and will apply to them directly in the weeks and months before the event. This is in addition to the hires employers make during and after the event.



4

## Active Job seekers

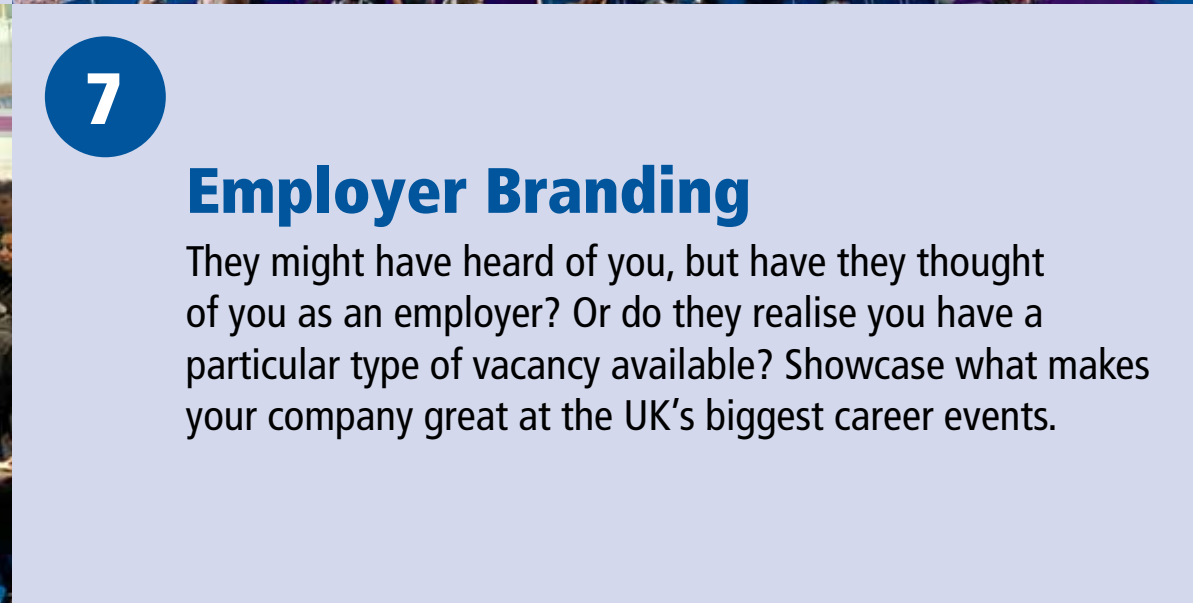
Over 10,000+ people pre-register to attend each event. Our extensive marketing campaign targets candidates that match the vacancies of our exhibitors.



5

## Passive Job seekers

How do you target people that are not actively looking for a new job? How do you reach people that are not signed up with job boards or recruiters? This is the very reason we hold our events in middle of the UK's busiest shopping centres. Over 100,000 people visit each venue during each event. As our events are open from all sides, these people can all freely walk in to meet the exhibitors.



6

## Face to Face Recruitment

By meeting thousands of candidates in person you can quickly assess their suitability for a role. Attending the event quite literally adds a personality to an application. This can save a lot of time and energy compared to online applications.



7

## Employer Branding

They might have heard of you, but have they thought of you as an employer? Or do they realise you have a particular type of vacancy available? Showcase what makes your company great at the UK's biggest career events.



8

## Standing Out Offline

With over a million online jobs in the UK, it is difficult for employers to stand out. In a competitive job market, it pays to be proactive and to go directly to the candidates.

# LONDON

JOB SHOW

Westfield

LONDON W12



# LONDON

JOB SHOW

Westfield

STRATFORD CITY



26 & 27 APRIL 24 • 11 & 12 OCTOBER 24

2 & 3 FEBRUARY 24 • 27 & 28 SEPTEMBER 24

# MANCHESTER

**JOB SHOW** **TRAFFORD**  
MANCHESTER

**MK** **JOB SHOW**  
**centre:mk**  
MILTON KEYNES



**1 & 2 MARCH 24 • 13 & 14 SEPTEMBER 24**

**22 & 23 MARCH 24 • 20 & 21 SEPTEMBER 24**

# BRISTOL

JOB SHOW

CABOT CIRCUS  
BRISTOL



## EXTENSIVE MARKETING CAMPAIGN

A targeted, regional, extensive marketing campaign for each Job Show. Examples of how we promote our events include:

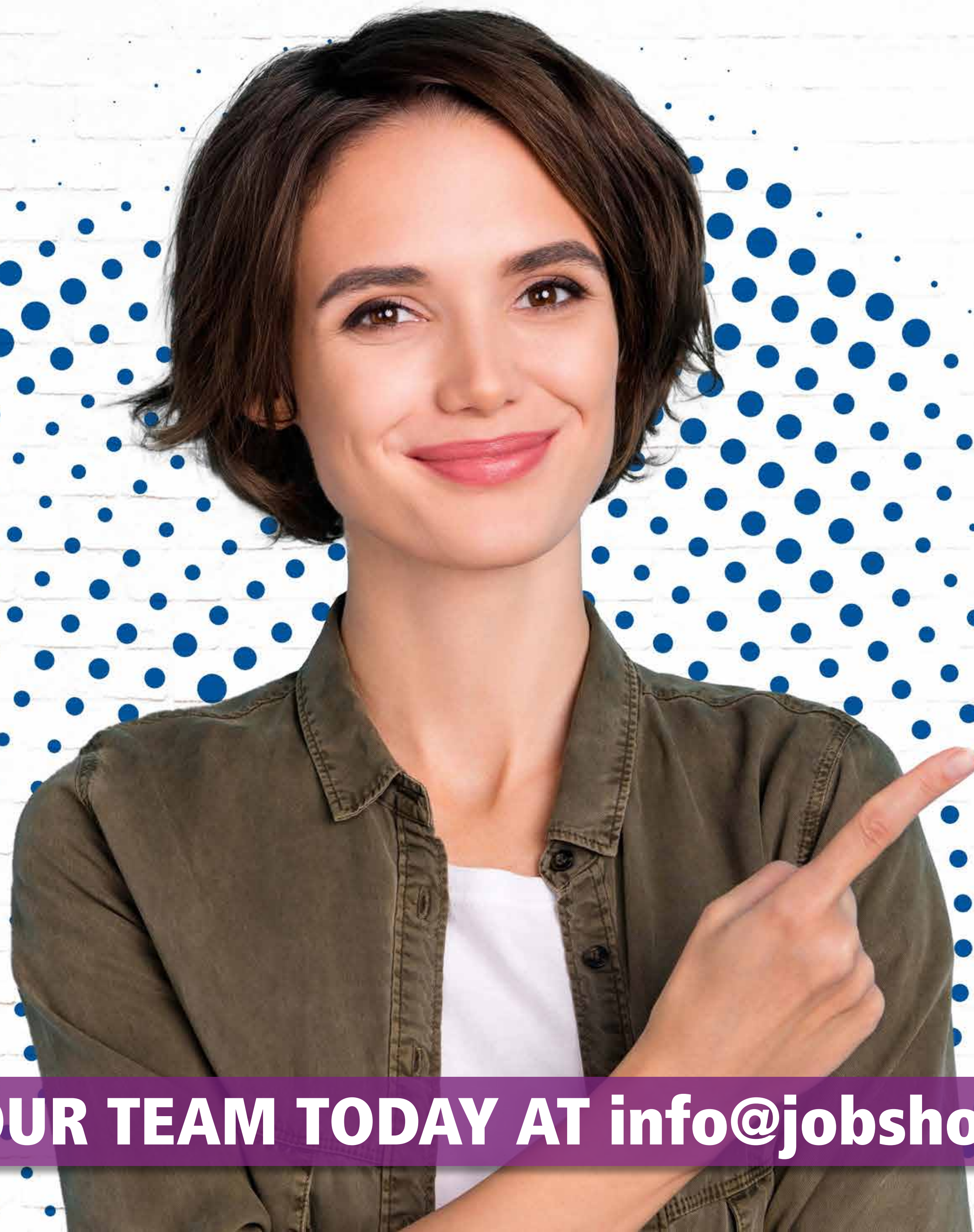
- Our own Job Show Magazines and Newspapers distributed across each region
- Adverts & Editorial in national & regional newspapers
- Targeted ITV & Sky TV campaign
- National & regional Radio Campaign
- National & regional PR Campaign
- Paid targeted social media campaigns on Facebook, Google, Instagram, LinkedIn & TikTok
- Regional Job Board
- Event Posters emailed to career advisors at 1,100+ universities and colleges across the UK
- Overground & Underground train station poster campaign
- Promoted Eventbrite campaign
- Exhibitor vacancies promoted on the event website throughout the year
- Digital Posters on all screens throughout each shopping centre venue
- Inclusion in shopping centre email newsletters to their visitor databases
- Promotional team positioned at local train stations and the shopping centre entrances directing people to the event



19 & 20 APRIL 24

For further details about the marketing campaign for each Job Show please email [info@jobshows.co.uk](mailto:info@jobshows.co.uk)





**BRISTOL**

**JOB  
SHOW**

**CABOT CIRCUS  
BRISTOL**

**LONDON**

**JOB  
SHOW**

**Westfield**  
LONDON W12

**LONDON**

**JOB  
SHOW**

**Westfield**  
STRATFORD CITY

**MANCHESTER**

**JOB  
SHOW**

**TRAFFORD**  
MANCHESTER

**MK** **JOB  
SHOW**

**centre:mk**  
MILTON KEYNES

**CONTACT OUR TEAM TODAY AT [info@jobshows.co.uk](mailto:info@jobshows.co.uk)**